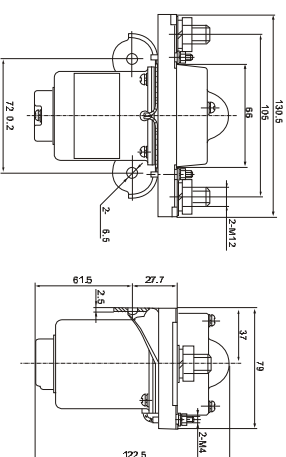




DONGYU ELECTRONIC

IRGE 49/50

外形安装图 Configurational mounting diagram

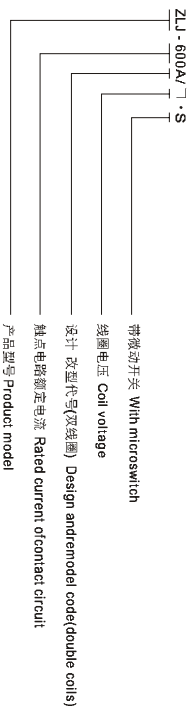


ZLJ-600A

Series contactors
系列接触器



产品型号含义 Nomination(nomogram)

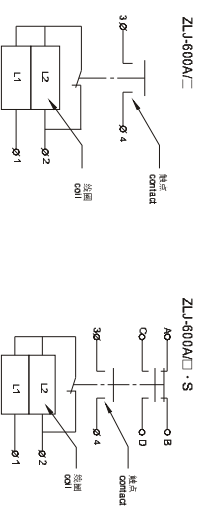


使用条件 Use conditions required

- 环境温度 Ambient temperature: -25~+40°C
- 相对湿度 Relative humidity: +20°C达98%(up to 98% a +20°C)
- 额定振动频率 Vibration freq. aithe fixed position: 3g, 1~50Hz 振幅 0.5mm
- 安装方向 Mounting directions: 任意 Optional

线路原理图 Circuit diagram

- L1: 启动绕组 Start winding
- L2: 保持绕组 Hold winding
- 3, 4: 触点接线端(3, 4: contact terminal)
- 1, 2为线圈接线端(1, 2 coil Terminal)
- A, B, C, D为微动开关接线端(A, B, C, D aux contact terminal)



简要技术参数 Basic technical data

| 序号 NO. | 参数名称 Parameters | 产品代号 Product code |
|--------|--|---|
| 1 | 线圈额定电压 Rated coil volt(VDC) | ZLJ-600A系列 series |
| 2 | 线圈功耗 Coil Power dissipation(W) | 12, 24, 30, 48, 60, 72, 120等(etc) |
| 3 | 20°C冷态启动线圈最大电流 Max.cold start current in cold state at 20°C(A) | 0.32 |
| 4 | 额定线圈额定电压 Rated volt of coil circuit(V DC) | 5 |
| 5 | 触点电路额定负载电流 Rated load current of contact circuit(A) | 48 |
| 6 | 20~5°C下, 冷态动作电压(V) (Coil with no suppression circuit) | 600A |
| 7 | 100A载下, 主触点接触电压降 Contact volt drop on main contact at 100A | 吸合 Pick-up 不大于线圈额定电压的70% Not above 70% of rated coil volt 释放 Release 线圈额定电压的(5~30)% (5~30)% of rated coil volt |
| 8 | 主触点最大通断能力 Max. make-break ability of contact | 通断1次/4倍额定负载电流, 通电持续时间 connect four times rated load current, make and breakance for 5ms |
| 9 | 额定电压下最大动作时间(ms)(线圈不带抑制电路) Max. operating time at rated volt(ms) (Coil with no suppression circuit) | 40 |
| 10 | 抗电强度 Puncture volt strength | 50Hz 1000V AC 1min |
| 11 | 电寿命(τ=0.001s)(次) Electric life(τ=0.001s)(cycles) | 60,000 Ops. |
| 12 | 机械寿命 Mechanical life | 10万次 100,000 Ops. |
| 13 | 工作规范 Working duty | 连续 Continuous |