



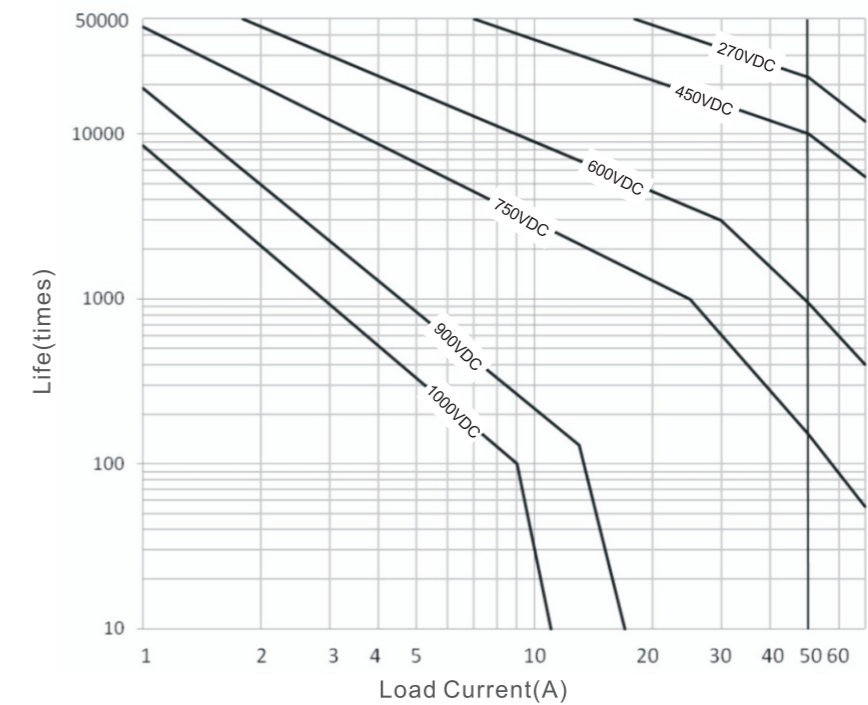
FEATURE

- 50A Contact switch capacity, Small volume;
- A set of bridge type N.O.contacts, contact circuit has "+", "-" polarity;
- Application: Telecom equipment、Solar system、Engineering machinery、Electromobile、Electric vehicle、Charging system、Train、Ships、UPS etc.
- Comply with the ROHS

SPECIFICATION		
NO.	Product No.	DH50
1	Contact type	1H(SPST-NO)
2	Rated load current of contact(Resistive load)	50A (DC-1)
3	The max switch current	250A (320V DC) 1 time
4	Contact voltage drop	≤80mV@50A
5	Switching voltage	12~900V DC
6	Standard pick-up time (including contact bounce time)	Max. 30ms.
7	Contact bounce time	Max. 5ms.
8	Release time	Max. 10ms.
9	Vibration (Sinusoid、80~2000HZ、peak)	(80~2000)HZ, ≤20g
10	Shock(11ms,1/2 Sinusoid、peak、pick-up)	≤20g
11	Operating ambient temperature	-40°C~+85°C
12	Relative humidity	20%~90% RH
13	Insulation resistance	Min. 100MΩ @ 500VDC
14	Dielectric strength (Between Insulated Electric Parts)	2200VAC 50 Hz/60 Hz (1 minute) Leak Current<1mA
15	Mechanical life	300,000 times
16	Electrical life	Please refer to diagram of resistance load life
17	Working duty	Continuous

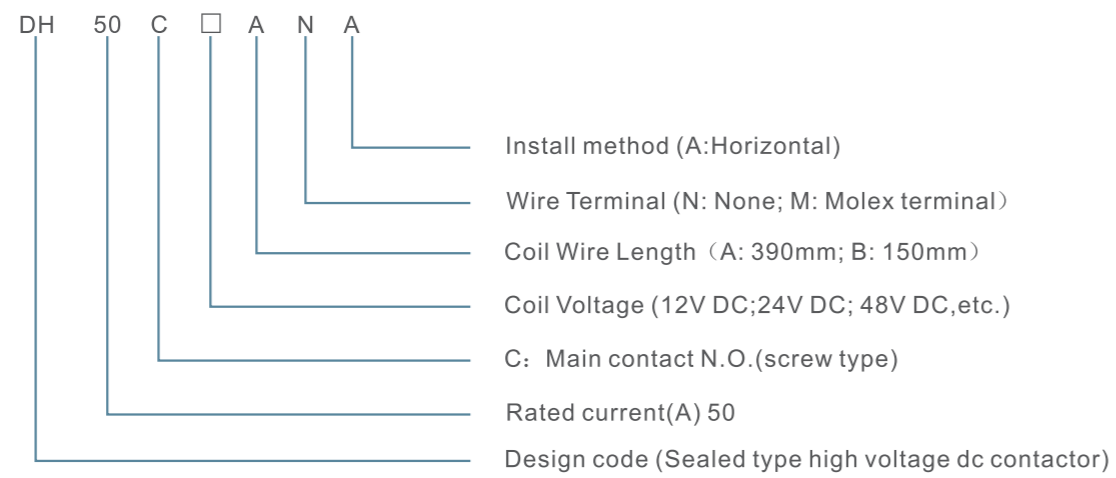
COIL DATA						
P/N	Coil voltage (V)	Coil operating voltage (V)	Pick-up voltage (V)	Release voltage (V)	Maintain current (A)	Coil power (W)
DH50	12	0.85US~1.2US	≤9	≥0.6	≤0.33	3~5W
	24		≤18	≥1.2	≤0.17	
	48		≤36	≥2.4	≤0.09	

Resistive load life at different voltages



- Note:
1. The rated electrical life is based on resistance load test. The load max inductance ≤300 μH; If used with inductive load, please do contact the factory first.
 2. The above curve is drawn according to the test and infers data, we suggest users confirm in practical use.
 3. When the product's Dielectric withstand voltage、insulation resistance is less than the product parameters in the table, the product is defined as a life to an end.

PRODUCT MODEL DEFINE

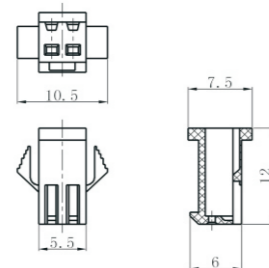


For example:DH50C12ANA means: Sealed type high voltage dc contactor. Rated current is 50A with DC-1 load, main contact N.O.(screw type), coil voltage is 12VDC,coil wire length is 390mm,horizontal installation.

Accessory

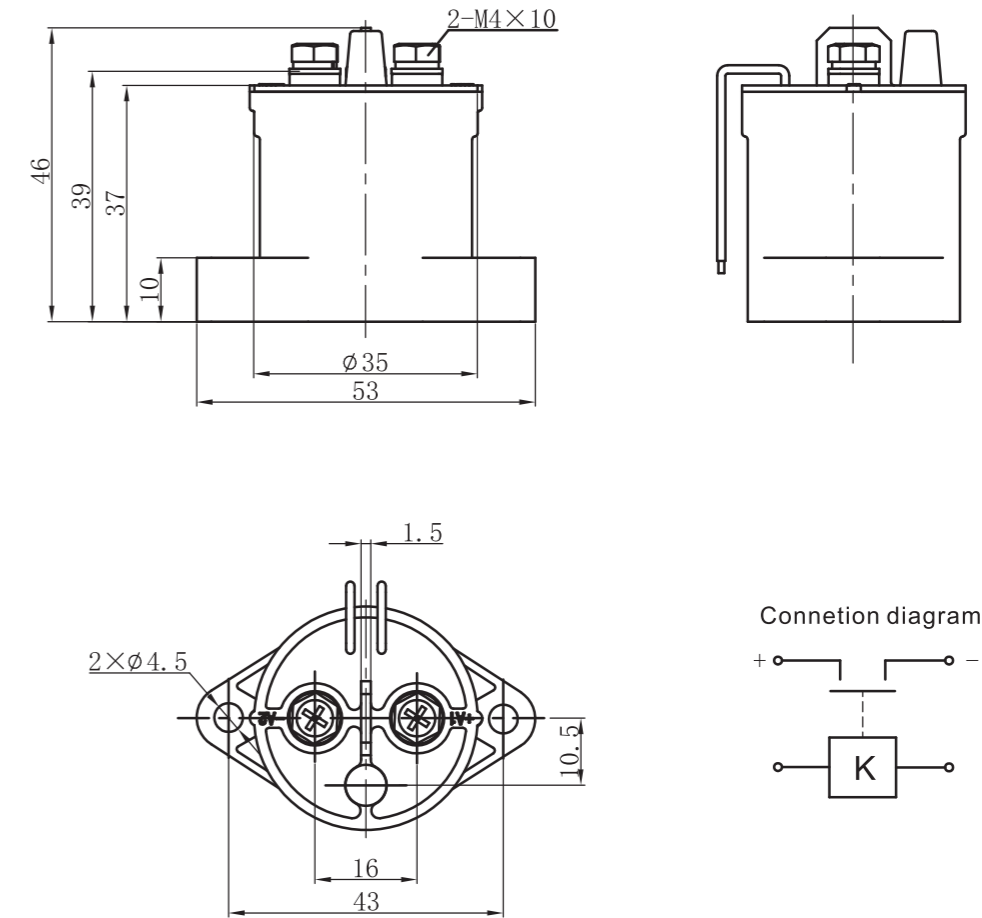
DH50 series product with terminal part no is:DH50C□□M□□,the additional code means terminal type.

Additional code: M4
 Plug type: SM-2Y-HW
 Terminal type: SMA-HW
 Terminal dimension figure:



Matched plug type: SM-2A-HW
 Matched terminal type: SMY-HW

Outline mounting dimension and circuit diagram



Dimension (mm)	Tolerance grade not noted (mm)
0~30	±0.3
30~60	±0.5
60~100	±1

Note: The main contact is polarized; Connect “+” polarity to the main contact terminal with “+” mark, and connect “-” polarity to the main contact terminal with “-” mark.