



FEATURE

- 100A Contact switch capacity, Small volume;
- A set of bridge type N.O.contacts& a set of N.O. aux contact, contact circuit has "+", "-" polarity;
- Application: Telecom equipment、Solar system、Engineering machinery、Electromobile、Electric vehicle、Charging system、Train、Ships、UPS etc.;
- Comply with the ROHS

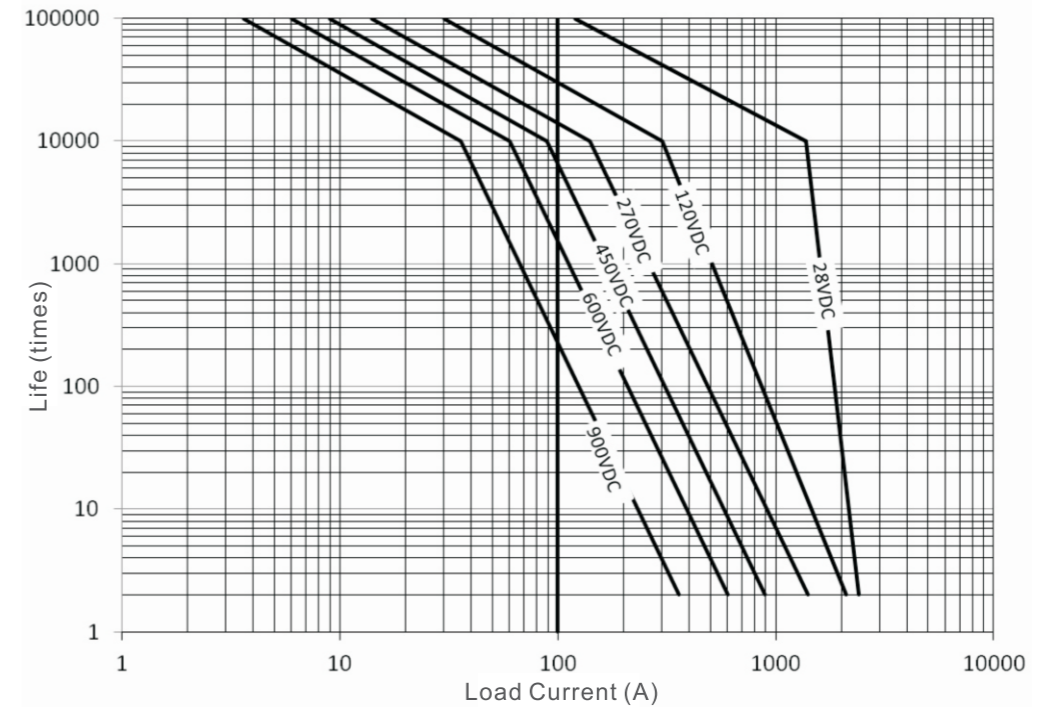
SPECIFICATION

NO.	Product No.	DH100
1	Contact type	1H(SPST-NO)
2	Rated load current of contact(Resistive load)	100A (DC-1)
3	The max switch current	1000A(320VDC) 1time
4	Contact voltage drop	≤80mV@100A
5	Switching voltage	12~900V DC
6	Standard pick-up time (including contact bounce time)	Max. 30ms.
7	Contact bounce time	Max. 5ms.
8	Release time	Max. 10ms.
9	Vibration (Sinusoid、80~2000HZ、peak)	(80~2000)HZ, ≤20g
10	Shock (11ms,1/2 Sinusoid、peak、pick-up)	≤20g
11	Operating ambient temperature	-40°C~+85°C
12	Relative humidity	20%~90% RH
13	Insulation resistance	Min. 100MΩ @ 500VDC
14	Dielectric strength (Between Insulated Electric Parts)	2200VAC 50 Hz/60 Hz (1 minute) 1000VAC 50Hz/60Hz(1 minute) (between aux. contacts) Leak current<1mA
15	Electrical life	Please refer to diagram of resistance load life
16	Aux. contact type	1NO
17	Rated load of aux. contact	2A/24V
18	Min. load of aux. contact	100mA/8V
19	Mechanical life	300,000 times
20	Mounting direction	Any direction
21	Working duty	Continuous

COIL DATA

P/N	Coil voltage (V)	Coil operating voltage (V)	Pick-up voltage (V)	Release voltage (V)	Maintain current (A)	Coil power (W)
DH100	12	0.85US~1.2US	≤9	≥1	≤0.6	5~7
	24		≤18	≥2	≤0.3	
	48		≤36	≥4	≤0.16	

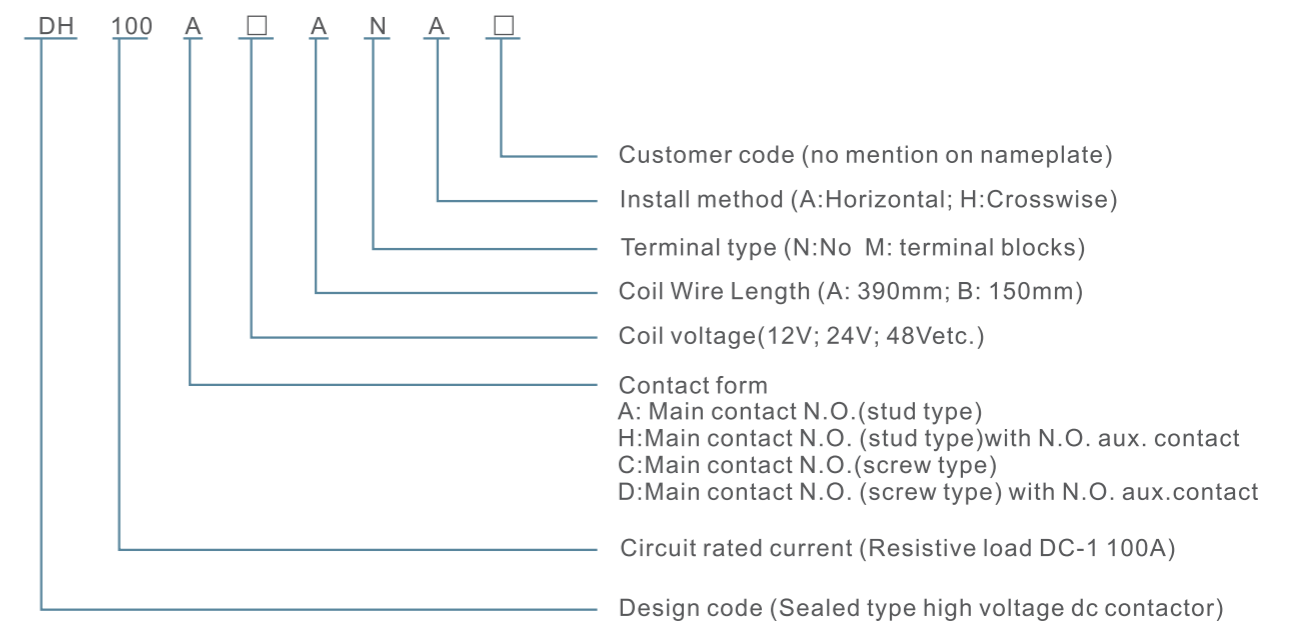
Resistive load life at different voltages



Note:

1. The rated electrical life is based on resistance load test. The load max inductance ≤ 300 μ H; If used with inductive load, please do contact the factory first.
2. The above curve is drawn according to the test and infer data. Suggest users confirm in practical use.
3. When the product's Dielectric withstand voltage、insulation resistance is less than the product parameters in the table, the product is defined as a life to an end.
4. Product max pick-up current is 300A to avoid contact cold welding.

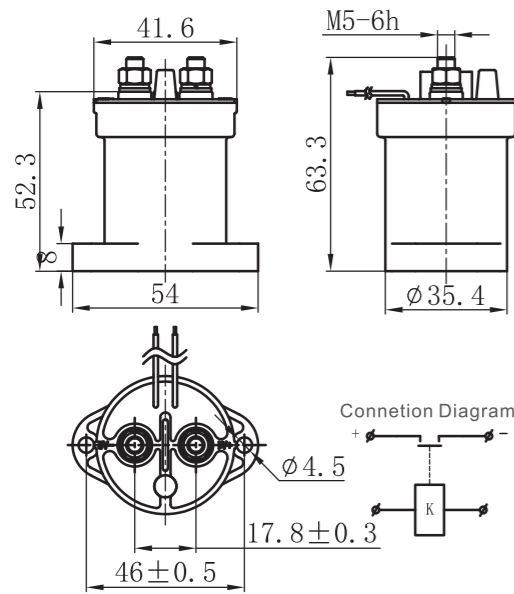
PRODUCT MODEL DEFINE



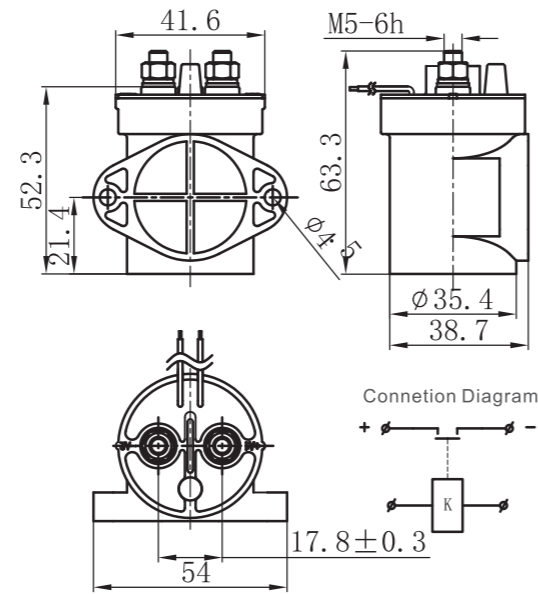
For example:DH100A12ANA means: Sealed type high voltage dc contactor. Rated current is 100A with DC-1 load, main contact N.O.(stud type), coil voltage is 12VDC,coil wire length is 390mm,horizontal installation.

Outline mounting dimension and circuit diagram

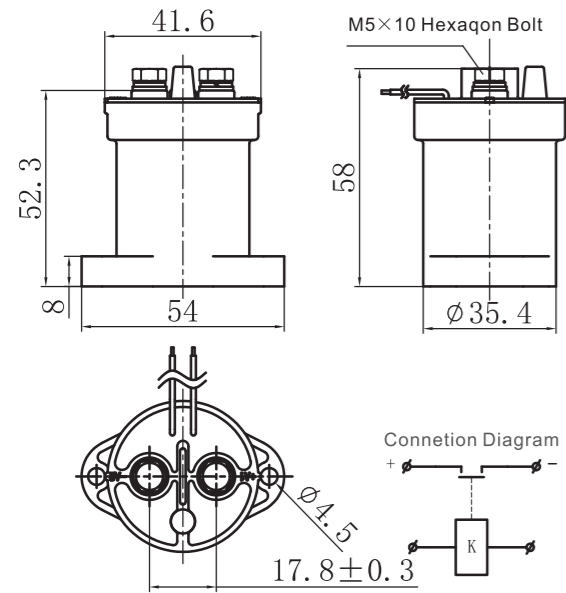
1、DH100A□□NA



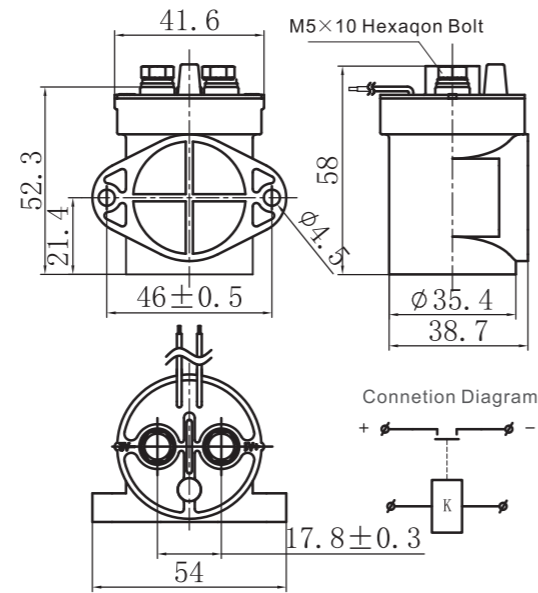
2、DH100A□□NH



3、DH100C□□NA

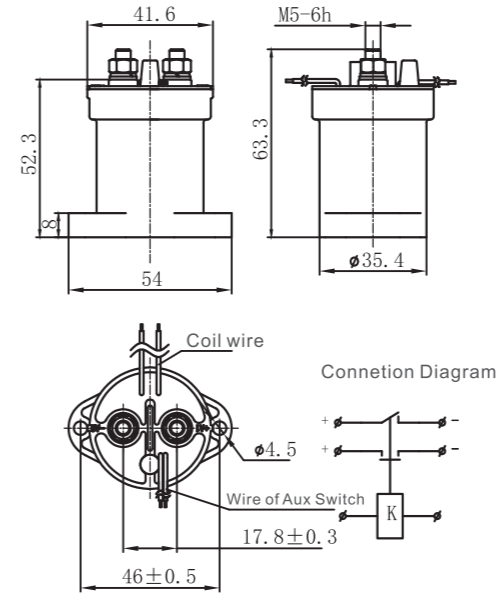


4、DH100C□□NH

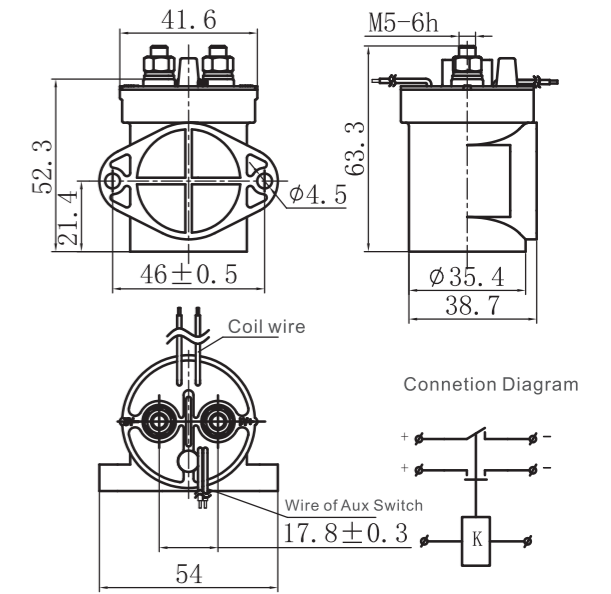


Outline mounting dimension and circuit diagram

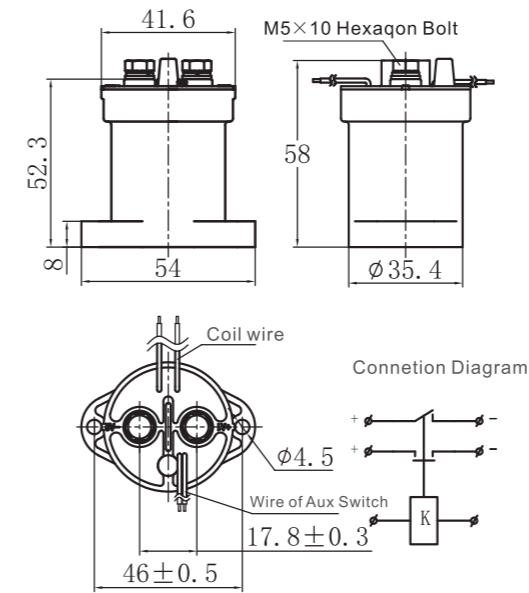
5、DH100H□□NA



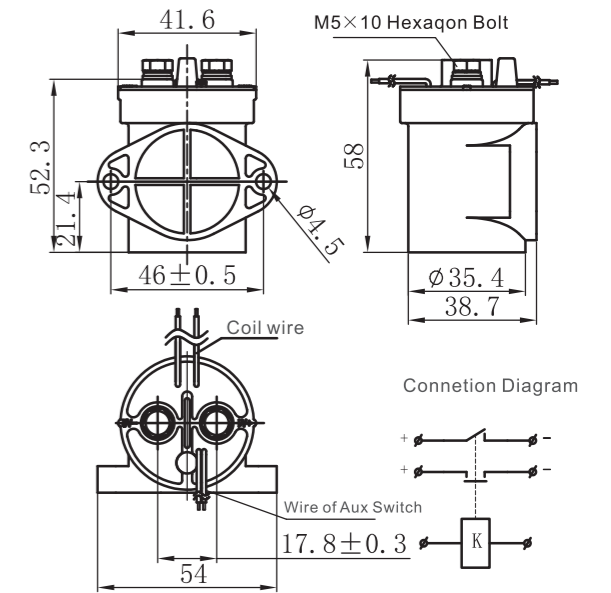
6、DH100H□□NH



7、DH100D□□NA



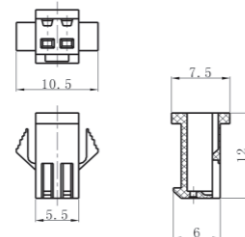
8、DH100D□□NH



Accessory

DH100 series product with terminal part no is: DH100□□□□□□□□, the additional code means terminal type.

Additional code: M4
Terminal type: SM-2A-HW
Terminal type: SMY-HW
Terminal dimension figure:



Fitted socket type: SM-2Y-HW
Fitted terminal type: SMA-HW

Dimension (mm)	Tolerance grade not noted(mm)
0~30	±0.3
30~60	±0.5
60~100	±1
>100	±2

Note: The main contact is polarized; Connect “+” polarity to the main contact terminal with “+” mark, and connect “-” polarity to the main contact terminal with “-” mark.